

Science Camp

Activities in biology, chemistry, physics & computing sciences.

July 12-16,
July 26-30,
August 3-6,
August 16-20

Levitating
Magnets!
Magic Balloons!
Parallel Circuits!
Balloon Rocket
Cars!

Art Camp

Watercolour Painting:

July 19-23

Ceramics:

August 9-13

Lessons taught by local
artists!

Materials will be provided

Registration packages can be
picked up at the **Sundre
Municipal Library, Caroline
Community Library, or certain
staff from River Valley School.**

You can deliver the packages to
either library or back to the
teachers until the end of the
school year, after which
registration packages will be
accepted via email or at the
Aspen Ranch website.

Questions? Concerns?

Please contact:

Meagan Fullerton-Lee – Camp Leader
mfullertonlee@hotmail.com,
1-403-638-4504

Nick Kennedy – Camp Leader
Nicky_Kennedy43@hotmail.com,
1-403-638-7706

Carrie Kibblewhite – Camp Leader
Kelly-rae_pinkenstien@hotmail.com,
1-403-638-4504

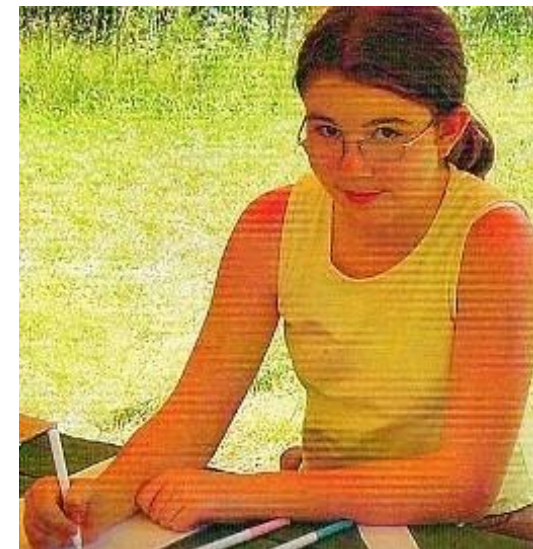
Dante Muzzo – Camp Manager
info@aspenranchcanada.com,
1-403-770-7475
1-403-722-4041

Or check
www.aspenranchcanada.com

Aspen Ranch Science & Art Summer Camp

Sponsored by Shell Canada

**A week long camp of
fun, learning &
memories!**



☀️☀️ Hi! If you're reading this, I can tell you're not interested in spending your Summer sitting at home being bored. Why not spend the days with your friends! Learning new things, creating memories and having a great time are all in store if you decide to sign up for the weeklong **Aspen Ranch Science & Art Summer Camp**. We have tons of fun activities and games to make sure your summer is a great one. And the best part is that it's **ABSOLUTLY FREE!**

With camp leaders all from Sundre High School, you'll get the knowledge and fun you want with the assistance you need. Capable, enthusiastic and friendly, the leaders are sure to make the best of your experience at Aspen Ranch.



"Spending my summer at Aspen Ranch seems like a great idea! Who doesn't love teaching people new things, working with friends, and having a good time?!"

– Nicki Kennedy, Camp Leader

All Science Camp weeks are from 9 A.M. until 3 P.M., while the Art Camp weeks will run from 9 A.M. until 12 P.M.

Directions to Aspen Ranch:
Travel north on Highway 22 from Sundre. Turn east on Highway 587. Pass the James River Bridge Store. When you come to Charlie's Transport, turn left (north) On Range Road 5.0. When you get to the T intersection turn left (west). Take your first right (Range Road 5.0 again). Go about 1/2 a kilometre and you will see the Welcome To Aspen Ranch sign. You've arrived!

Since we are spending a lot of time outdoors, make sure you're dressed for the weather. Bring sunscreen, raincoats, boots and hats if necessary! You'll also need to pack a lunch, drinks and snacks (no peanut products please) to keep your energy levels high for the exciting days.